



MADISON TOFFEE

Wood Species:	Birch
Door Style:	Full Overlay, Raised Panel with Glazing (Engineered Center Panel)
Box Construction:	1/2" Solid Plywood (Birch/Poplar)
Drawer Glide:	Side-Mount Epoxy
Drawer Head:	5-Piece, Engineered Center Panel (Matches Door)
Drawer Construction:	5/8" Solid Wood, Dovetail Construction
Hinge:	6-way Adjustable, Concealed Cup Hinge
Cabinet Interior:	Natural UV Coated
Cabinet Exterior:	Matching Door Finish
Assembly Method:	Metal Clip
Delivery:	1-21 Business Days

Client -

Sales Rep. -

360° Virtual Kitchen Tour

We have provided you with a detailed 3D experience that makes you feel like you're inside your new kitchen. Simply use this panoramic view from any device.

CLICK HERE FOR A VIRTUAL TOUR OF YOUR KITCHEN



Scan QR Code

Floorplan



VIEW MY KITCHEN

Floorplan



VIEW MY KITCHEN

Elevation



VIEW MY KITCHEN



Elevation



VIEW MY KITCHEN



Elevation



VIEW MY KITCHEN



Elevation



VIEW MY KITCHEN



Elevation

 [VIEW MY KITCHEN](#)




Elevation

 [VIEW MY KITCHEN](#)




Would you like changes?

Please use this page to draw any adjustments.




Need to make adjustments to your design?

→



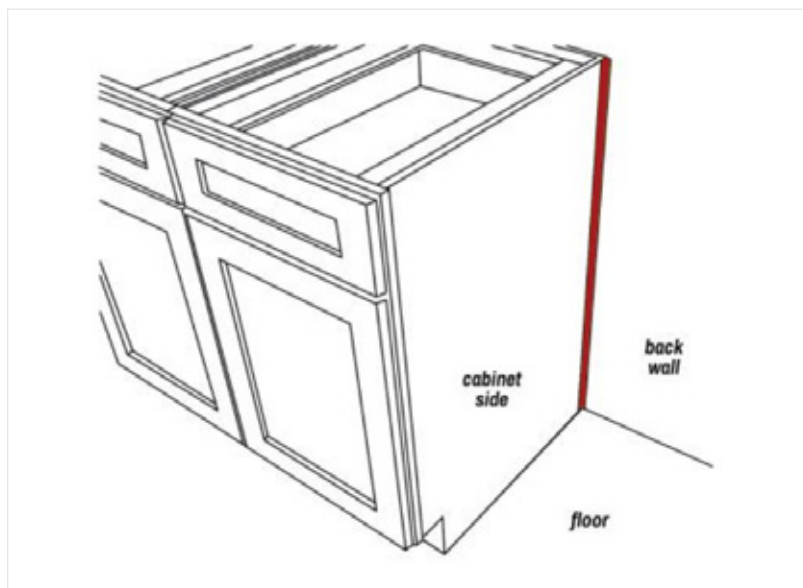
Print this page and draw the updates with red pen.

→



Email back to your sales representative.

Trim Options and Upgrades

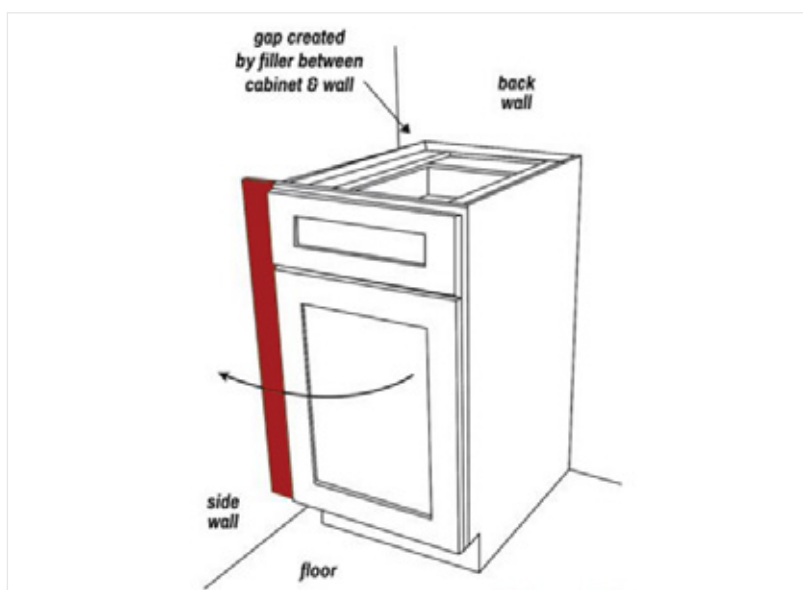
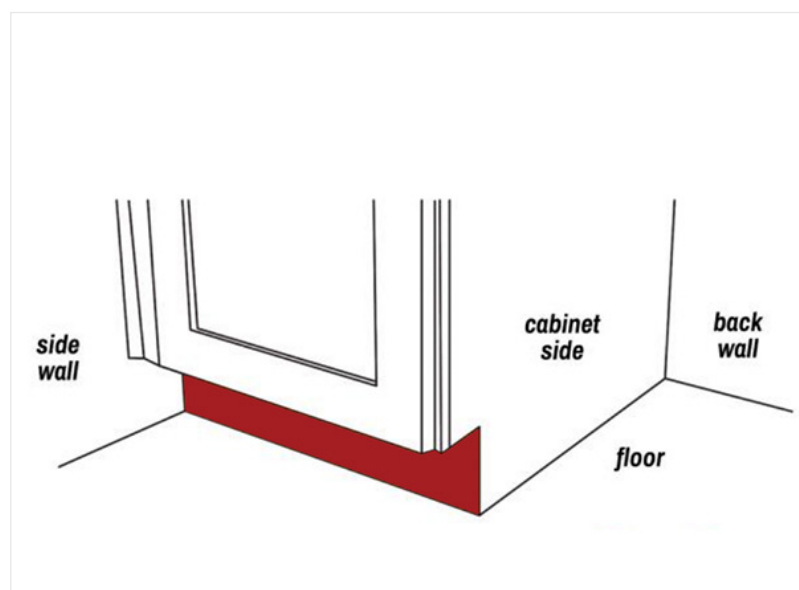


SCRIBE

Scribe Molding is a thin strip of wood that covers gaps and inconsistencies where the cabinet meets the ceiling, floor or wall. This piece of wood is typically straight on one end which is placed against the wall, but the other end is curved to transition and fit tightly against the cabinet. Scribe can also be used for installation on crown and light rail moldings.

TOE KICK

Toe kick is the recessed area between the base cabinet and the floor. It is also referred to as the toe space. A toe kick is the recessed area at the bottom of a base cabinet. All toe kicks are manufactured unfinished and our TK8 will be needed to properly finish all Toe Kick areas.



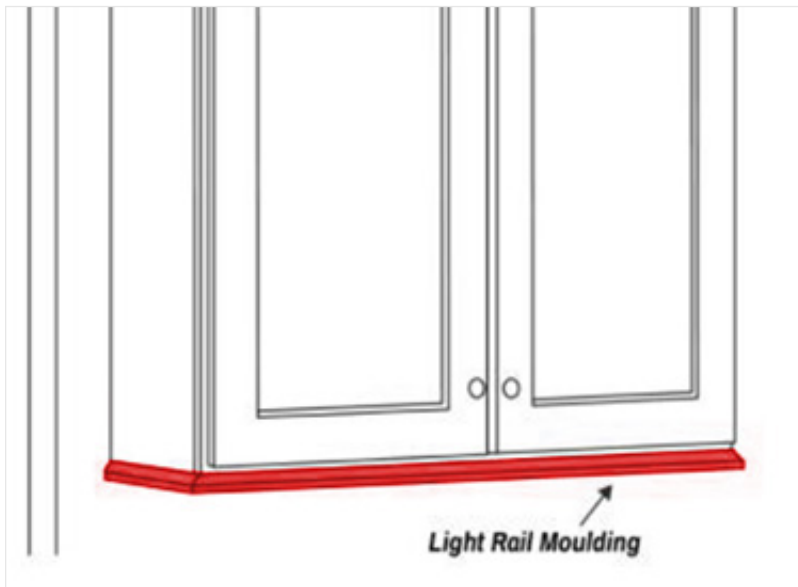
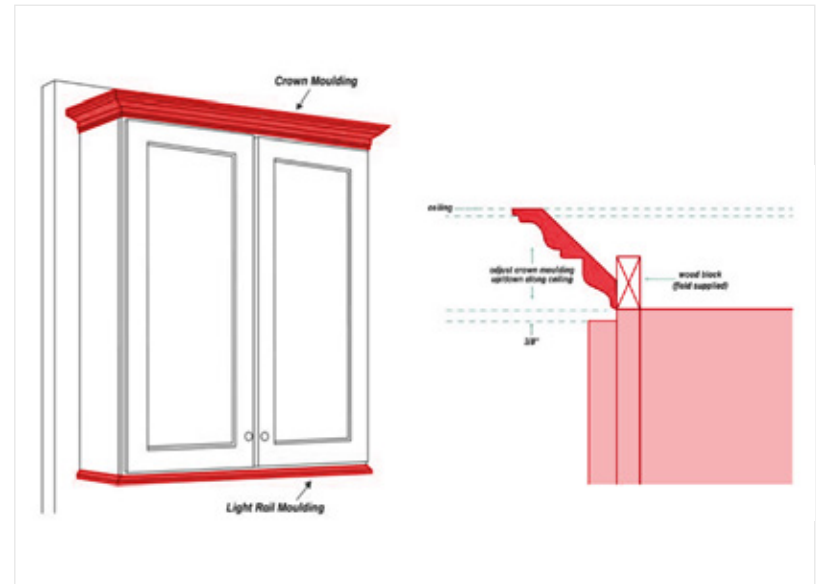
FILLERS

A filler strip is a piece of wood that is used to cover an opening or gap. Filler strips are available in standard sizes, and they are easy to install. Carpenters cut down to make their own strips to match their specific needs meaning one filler can be cut down and used for multiple areas. Ex. WF342 could be cut down to two 1 1/2 inch pieces.

Trim Options and Upgrades

CROWN MOLDING

Crown Molding is a horizontal molding projecting along the top of a wall cabinet and typically shaped to function as a decorative feature.

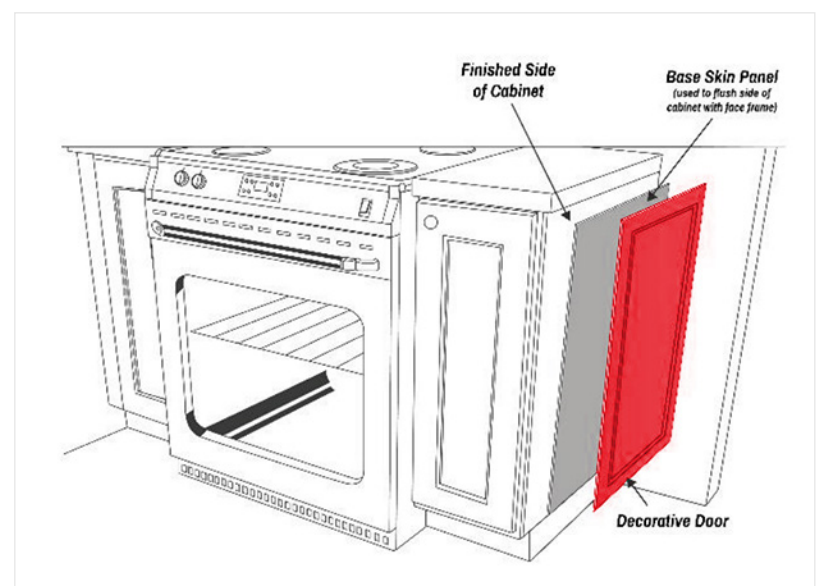


LIGHT RAIL MOLDING

Light Rail Molding is a decorative molding applied to the bottom of wall cabinets. It can function as a way to conceal under cabinet lighting or used for a custom look on your cabinets.

DECORATIVE DOOR PANELS

Decorative Door Panel is a finished false door that is placed against the cabinet side. This product can also be used on the back of a cabinet most commonly a peninsula or island.



Now, Let's Organize...

Along with offering beautiful and lasting cabinetry, we are also offering a huge selection of high-quality kitchen cabinet storage/organizational products and decorative hardware. Make the most of your new Lily Ann cabinets or add extra storage space to your existing cupboards and drawers. From trash can pull-outs and space dividers to a wide variety of decorative hardware, we're sure to have that "little extra" you've been searching for.



Double Trash Can Pull Out
SKU: TCCK



Two Tier Wood Cutlery Drawer
SKU: 4WTCB-24



Cutlery Drawer Insert
SKU: CDI20



30" Pot and Pans Roll Out Shelf
SKU: PPORT30



Blind Corner Base Caddy
SKU: BC-CADDY



2-Shelf with Drawer 32" Banded Wood Kidney Lazy Susans
SKU: POLST36



Knife Drawer Organizer
SKU: B18KS



Spice Tray Drawer Insert
SKU: STI20

Explore More Affordable Home Products



Contemporary Steel Pull
SKU: LACBP305128195



Contemporary Steel Pull
SKU: LACBP305128900



Contemporary Steel Pull
SKU: LACBP305128160



Transitional Metal Pull
SKU: LACBP650128900



Contemporary Metal Knob
SKU: LACBP5923140



Contemporary Metal Knob
SKU: LACBP5923160



Contemporary Metal Pull
SKU: LACBP873128195



Contemporary Metal Pull
SKU: LACBP873128BORB



Traditional Metal Knob
SKU: LACBP79032900



Traditional Metal Knob
SKU: LACBP79032180



Contemporary Metal Pull
SKU: LACBP873128CHBRZ



Contemporary Metal Pull
SKU: LACBP8160128BORB

Explore More Affordable Home Products






Cabinet Lighting

Starting from **\$8.50** ~~\$23.99~~

Floating Shelves

Starting from **\$23.60** ~~\$110.00~~





Range Hoods

Starting from **\$420.00** ~~\$2,100.00~~

Kitchen Products



Kitchen Faucet
Starting from **\$74.99** ~~\$199.98~~



Kitchen Sink
Starting from **\$159.99** ~~\$599.98~~



Quartz Tops
Starting from **\$234.99** ~~\$439.49~~

Explore More Affordable Home Products

Bathroom Products



Bathroom Faucets
Starting from **\$74.99** ~~\$149.98~~



Shower Faucets
Starting from **\$214.99** ~~\$429.98~~



Bathroom Hardware
Starting from **\$3.99** ~~\$11.98~~

Flooring & Backsplash



Tiles
Starting from **\$1.99/sq ft**
~~\$3.98/sq ft~~



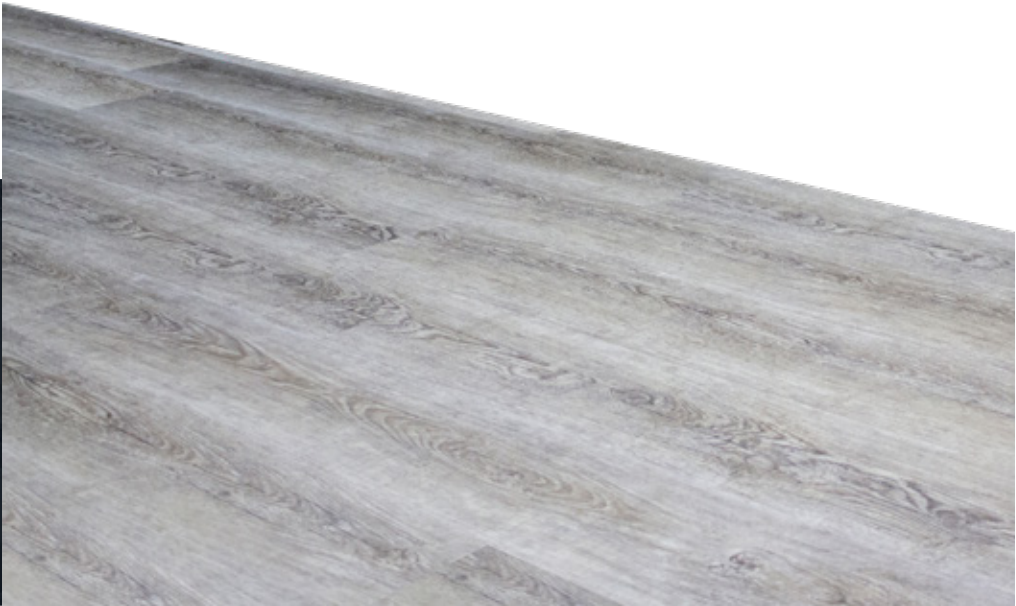
Mosaic Tiles
Starting from **\$7.99/sq ft**
~~\$15.98/sq ft~~



Backsplash
Starting from **\$6.99/sq ft**
~~\$13.98/sq ft~~

SPC Flooring

Starting from **\$2.75/sp ft**
~~\$4.98/sp ft~~



Lighting



Recessed Lighting
Starting from **\$8.99** ~~\$17.98~~



Outdoor Lighting
Starting from **\$44.99** ~~\$89.98~~

Materials



Cultured Stone
Starting from **\$4.99** ~~\$9.98~~

AVA Cabinetry

800 S. Center St.,
Adrian MI 49221, USA

Call: 888-315-6180

Email: dealers@avacabinetry.com

Follow Us On Social Media

 Facebook

